



## Leadership



Michael Hoyt, PhD  
Director



Michelle Fortier, PhD  
Assistant Director



Jose Lechuga, MS  
Facility Manager

## Mission

To support Cancer Center members and cancer researchers with expertise and services in planning, conducting, and dissemination of translational biobehavioral research.

- Assists in the conduct and communication of high quality biobehavioral research.
- Provides consultation on behavioral and/or quality-of-life patient-reported outcome measures, research design, data collection, interpretation of self-report data, manuscript preparation, and behavioral interventions.
- Participates in translational research in psychoneuroimmunology and examination of behavioral issues that enhance recruitment and development of behavioral and quality-of-life outcomes.
- Offers expertise on instrument selection and development, as well as consideration for data collection assessment intervals and strategies to obtain valid and reliable data.

## Services

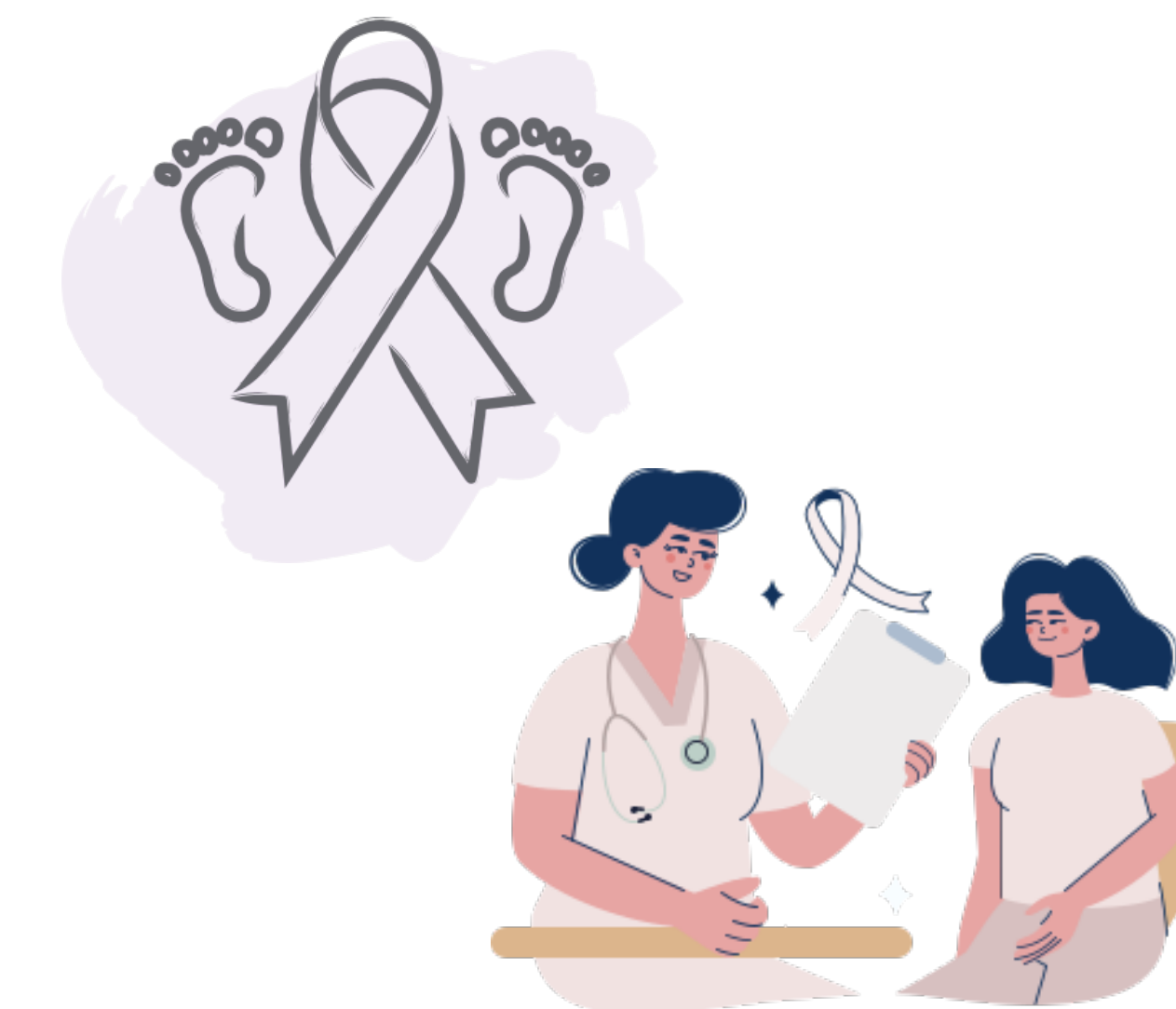
- Selection of Patient Reported Outcomes and Measures (PROs)
- Participant Recruitment and Retention Strategy Assistance
- Qualitative and Quantitative Data Collection and Management
- Intervention Design and Implementation
- Training and Education in biobehavioral research
- Consultation and support in best practices for the collection of biomarkers in behavioral studies
- Advanced project-oriented special study design and analysis

## Research Highlights

### 1 | Standardizing the Fertility Preservation Discussion Amongst Reproductive Age Women Diagnosed with Cancer

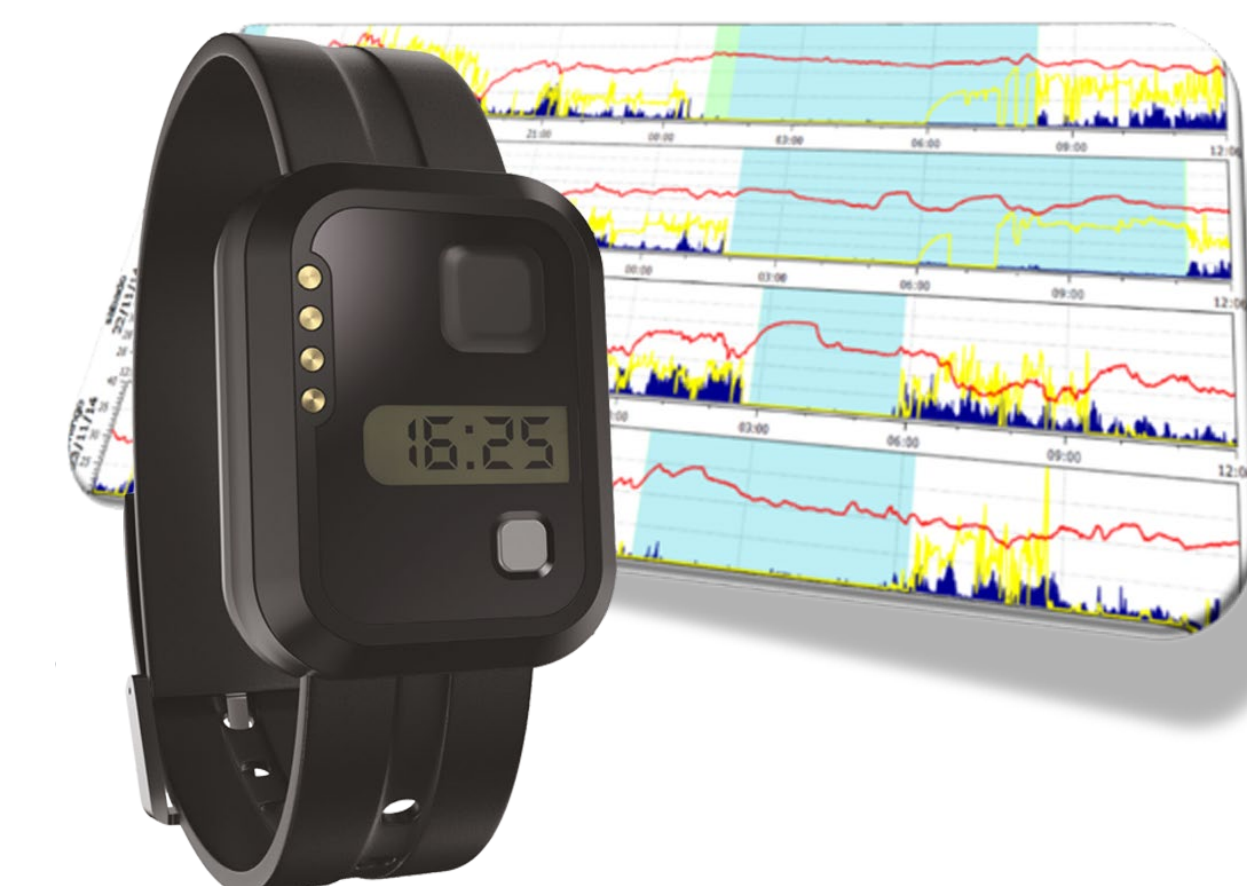
PI: Holly Yong, MD (Assistant Clinical Professor, Surgery)

The BBSR is assisting in the development of a comprehensive patient-report tool regarding oncofertility and fertility preservation. The tool focuses on the utility of conversations with healthcare providers and factors influencing fertility decision making. This project aims to gain deeper insights into how patients can make informed choices about reproductive health after cancer.



### 2 | Addressing Financial and Social Needs Among Patients with Cancer

PI: Gelareh Sadigh, M.D. (Associate Professor In Residence, Radiological Sciences, School of Medicine)



The BBSR is engaged in the assessment of objective sleep quality monitoring through the use of wrist actigraphy to examine the potential impact of a financial needs intervention among Latinx patients. In addition, the BBSR will collect and analyze qualitative interview data about participation.

### 3 | Stress & Well-being in Asian Americans with Advanced/Metastatic Cancer

PI: Jacqueline H. J. Kim, PhD (Assistant Professor In Residence, Medicine/HemOnc)

The BBSR is supporting with participant coordination and tracking, in addition to processing and storage of biosample devices collected from participants throughout the study. Through this project, the BBSR developed and tested a protocol for the collection of dried blood spot sample through a TASSO collection device. This involved coordination of the manufacturer, investigator, and the Institute for Interdisciplinary Salivary Bioscience.



## Key Equipment & Technologies

- Patient Reported Outcomes and Measures (PROs)
- Participant Recruitment and Retention
- Data Collection and Management
- Intervention Design and Implementation
- Training and Education
- Biosample Collection for Behavioral Research

## Future Plans

### Enhancing Equity, Diversity, and Inclusion, Community Engagement & Catchment Area

- The BBSR is in discussion with the COE and ICTS to develop a training program for multi-lingual community members who would like to participate in the research process and learning research interviewing skills
- Continued expansion of focus on Asian American and Latino survivorship populations

### Education and Training

- Continued involvement in the Cancer Clinical Trials training program
- Planned trainings on biobehavioral research methods and biomarker use (workshops)

### Planned and Continued Activities

- Continue to explore the formation of a workgroup for inclusion of PROs in EPIC
- Continued expansion of project portfolio

## Contact Information

